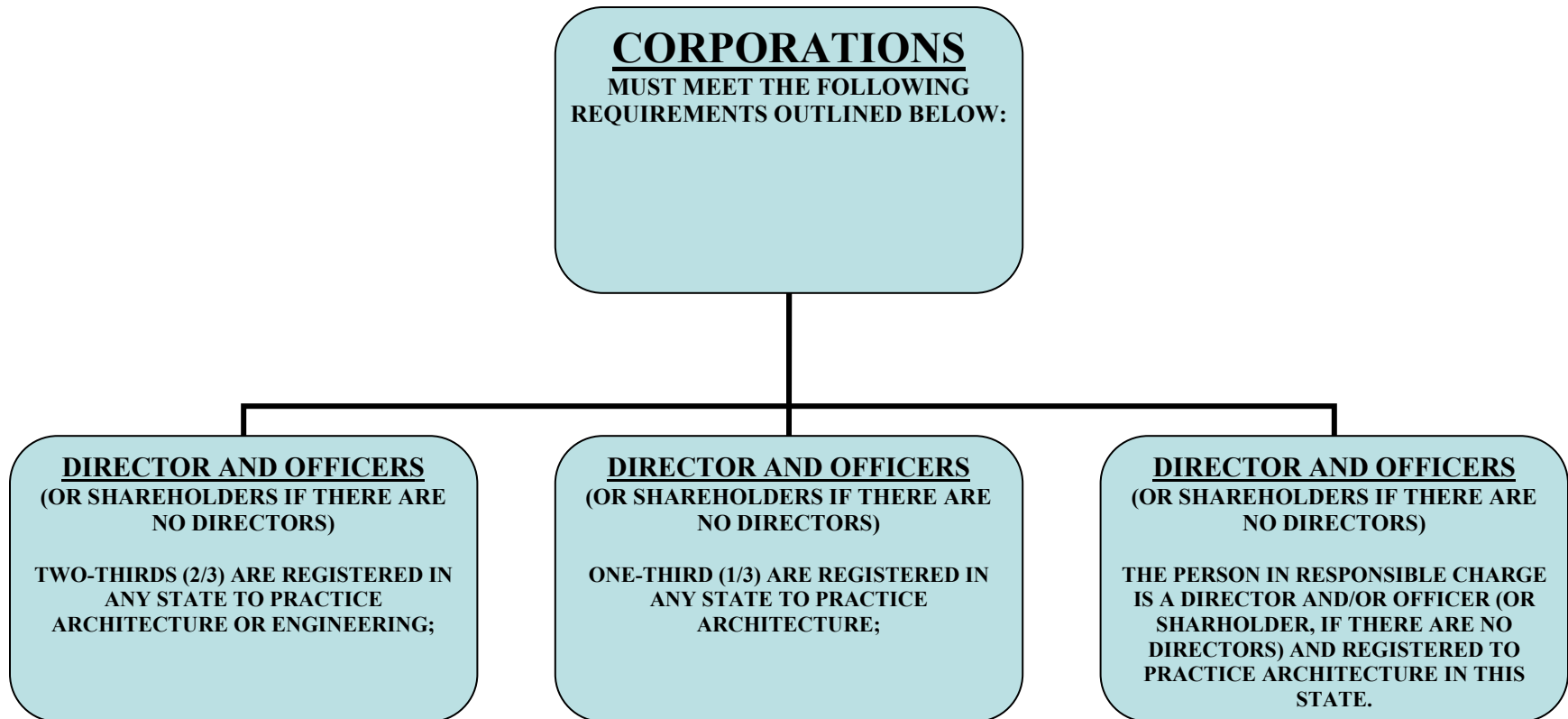


CERTIFICATE OF AUTHORIZATION ALL APPLICATIONS

REQUIREMENT ORGANIZATIONAL CHART

THE FOLLOWING REQUIREMENTS, ACCORDING TO RHODE ISLAND GENERAL LAWS §5-1-15.1, MUST BE MET.



LIMITED LIABILITY
COMPANIES

**MUST MEET THE FOLLOWING
REQUIREMENTS OUTLINED
BELOW:**

MANAGERS

**(OR MEMBERS IF THERE ARE NO
MANAGERS)**

**TWO-THIRDS (2/3) ARE REGISTERED IN
ANY STATE TO PRACTICE
ARCHITECTURE OR ENGINEERING;**

MANAGERS

**(OR MEMBERS IF THERE ARE NO
MANAGERS)**

**ONE-THIRD (1/3) ARE REGISTERED IN
ANY STATE TO PRACTICE
ARCHITECTURE;**

MANAGERS

**(OR MEMBERS IF THERE ARE NO
MANAGERS)**

**THE PERSON IN RESPONSIBLE CHARGE
IS A MANAGER (OR MEMBER IF THERE
ARE NO MANAGERS) AND REGISTERED
TO PRACTICE ARCHITECTURE IN THIS
STATE.**

LIMITED LIABILITY
PARTNERSHIPS
MUST MEET THE FOLLOWING
REQUIREMENTS OUTLINED
BELOW:

PARTNERS

TWO-THIRDS (2/3) ARE REGISTERED IN
ANY STATE TO PRACTICE
ARCHITECTURE OR ENGINEERING;

PARTNERS

ONE-THIRD (1/3) ARE REGISTERED IN
ANY STATE TO PRACTICE
ARCHITECTURE;

PARTNERS

THE PERSON IN RESPONSIBLE CHARGE
IS A PARTNER AND REGISTERED TO
PRACTICE ARCHITECTURE IN THIS
STATE.

PARTNERSHIPS
MUST MEET THE FOLLOWING
REQUIREMENTS OUTLINED BELOW:

PARTNERS

TWO-THIRDS (2/3) ARE REGISTERED IN
ANY STATE TO PRACTICE
ARCHITECTURE OR ENGINEERING;

PARTNERS

ONE-THIRD (1/3) ARE REGISTERED IN
ANY STATE TO PRACTICE
ARCHITECTURE;

PARTNERS

THE PERSON IN RESPONSIBLE CHARGE
IS A PARTNER AND REGISTERED TO
PRACTICE ARCHITECTURE IN THIS
STATE.